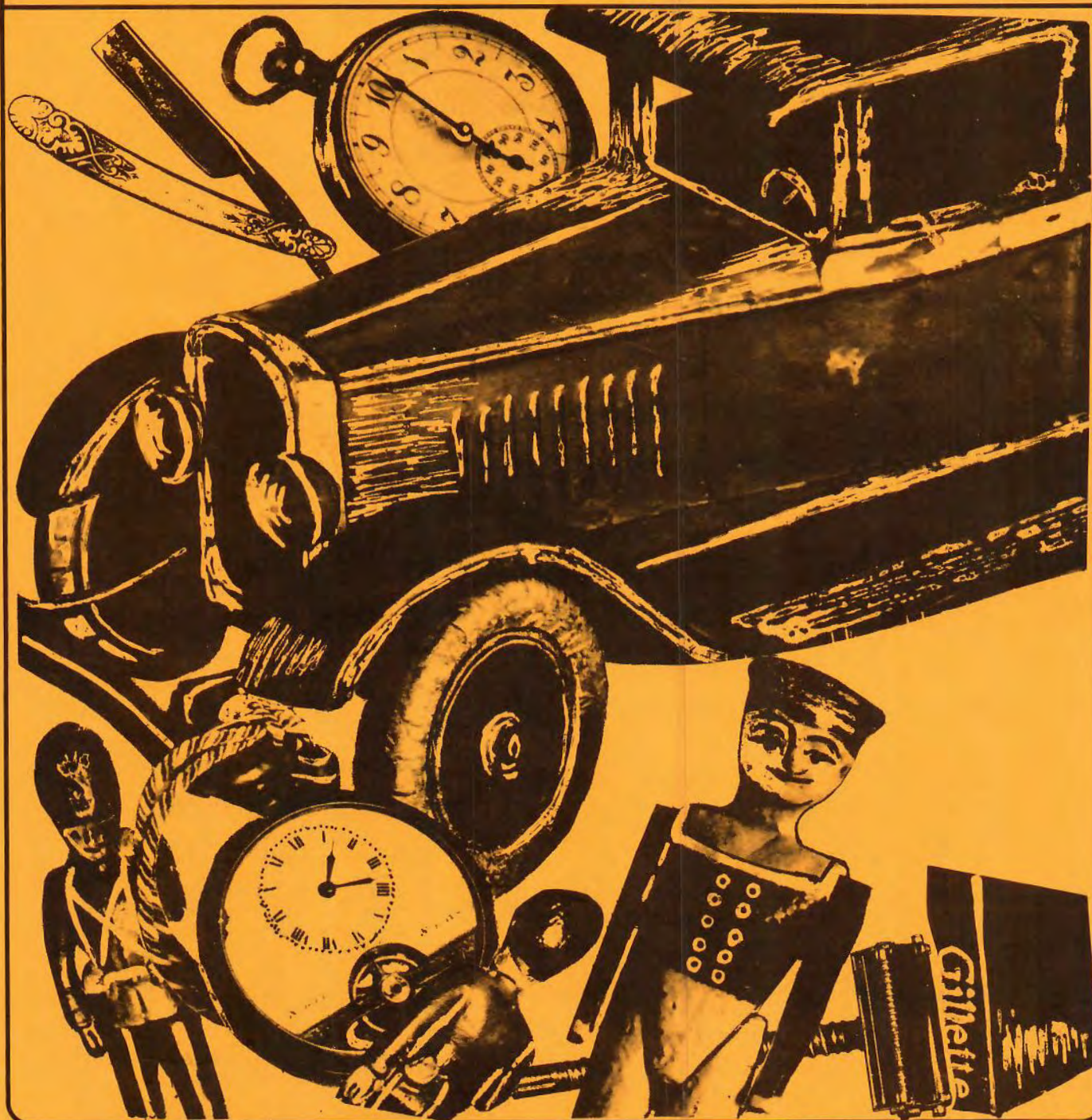


The Distributor

Orange County Model A Ford Club

JANUARY, 1993
VOLUME 33, ISSUE 1

EDITOR: JIM WILLETT
PUBLISHERS: BOB & KARYN SITTER



1993 BOARD MEMBERS

PRESIDENT	LOU SPIELBERGER	714/751-5102
SECRETARY	WADE ROBERTS	714/675-5457
TREASURER	JIM KHALAF	714/731-8064
TECHNICAL ASST.	TERRY LUCAS	714/633-0390
	PAUL STEED	714/998-0394
ACTIVITIES ASST.	JIM MARSH	714/531-7237
ASST.	RICHARD PARRISH	714/638-2355
	TOM ENDY	714/897-5861
SPECIAL EVENTS	ROGER ADAY	714/993-4558
EDITOR	JIM WILLETT	714/768-4939
PUBLISHERS	BOB & KARYN SITTER	714/777-2486

COMMITTEE CHAIRPERSONS

SUNSHINE & SORROW	BEV MARSH	714/531-7237
ACCC REP.	LARRY CONKOL	714/535-1411
REGIONAL REP.	PAUL STEED	714/998-0394
REFRESHMENTS	ED COTE'	714/542-6161
RAFFLE	JOE RECKER	714/639-6972
BUTTONS	DON TUNE	714/832-8239
CLUB GREETER	JON HEILAND	714/836-4244

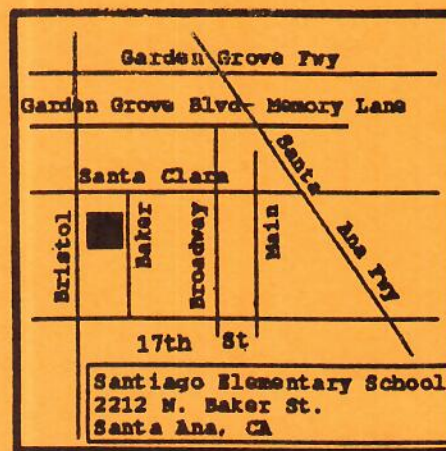
GENERAL MEETING

JANUARY 14, 1993

MEETING @ 7:30 P.M.

SANTIAGO ELEMENTARY SCHOOL

(SEE MAP)



MONTHLY MEETING MAP

BOARD MEETING

by Wade Roberts
Secretary

The meeting was called to order at 7:46 P.M. at the Spielberger's home. Both new and old board members present were Paul Steed, Jim Khalaf, Roger Aday, Jim Willett, Peggy Bloom, the Carlyles, Spielbergers, Marshes and the Parrishs

Lou pointed out the need to use orange traffic cones at this years' pancake breakfast. The Club may be able to borrow or rent them. There was a discussion about the benefits or lack of that we receive by supporting the ACCC. Lou will contact Larry Conkol to gather more information.

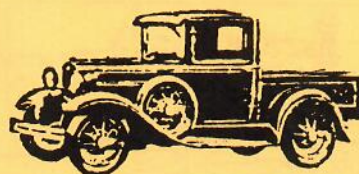
According to Les, members who have not paid their dues by now will probably have the delivery of their "Restorer" interrupted. Les was contacted by the person who judges the more than 3000 MAFCA chapter newsletters. Out of 28 finalists there are 3 official MAFCA awards. Results will be announced at the January Club meeting.

Roger reported on the "dual" horn seminar; one at 8:30 A.M. and another at 8:30 P.M. Several horns were cleaned up and tuned. As new special events chairperson Roger will begin contacting and contracting malls for showing off our Fords and raising some funds. Lou suggested that the board determine a fee to charge for shows and stick with it.

Outgoing President Paul Steed transferred all responsibilities of the Club to President Lou Spielberger and new board members. Lou's first order of business was to move board meetings from Wednesday to Thursday.

Glenn Johnson will be asked by Lou to write a brief history of the Club. It is to be reviewed by Jon Heiland and Jim Marsh and is to be included in an updated "new member" packet to be ceremoniously presented to Model A Ford enthusiasts who join our club.

THE PREZ SEZ



by Lou Speilberger
President

First, I would like to thank you for giving me the opportunity to serve as our Club's President. The 1993 board and I will try our best to achieve the goals you set and to do as well as the boards in past years.

Introducing the 1993 board:

Secretary	Wade Roberts
Treasurer	Jim Khalaf
Technical	Terry Lucas, Paul Steed
Activities	Jim Marsh, Richard Parrish
Special Events	Roger Aday
Editor	Jim Willett
Publisher	Bob & Karyn Sitter

Committees	
Sunshine & Sorrow	Bev Marsh
ACCC Rep	Larry Conkol
Regional Rep	Paul Steed
Refreshments	Ed Cote'
Raffle	Joe Recker
Buttons	Don Tune
Club Greeter	Jon Heiland
Pancake Breakfast	Linda Tune

Dues are due and must be paid or no Distributor, Roster, or Restorer. Please send you dues to Jim Khalaf 1781 Derby Drive, Santa Ana, Ca 92705

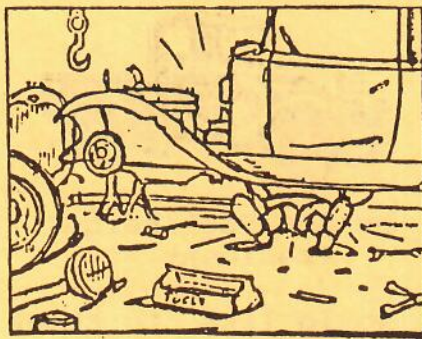
That's all for now folks.

BOARD MEETING (cont.)

Lou also suggested the review of the printed tour rules at the next board meeting.

Roger presented the following motion: Keys to the Club's post office box shall be given to president, secretary and treasurer exclusively. Motion carried. Lou will find out how much it would cost to insure all members to use the club trailer. The meeting was adjourned at 9:06 P.M. The next board meeting will be on Thursday, January 21, 1993 at Roger Aday's home.

IN THE GARAGE

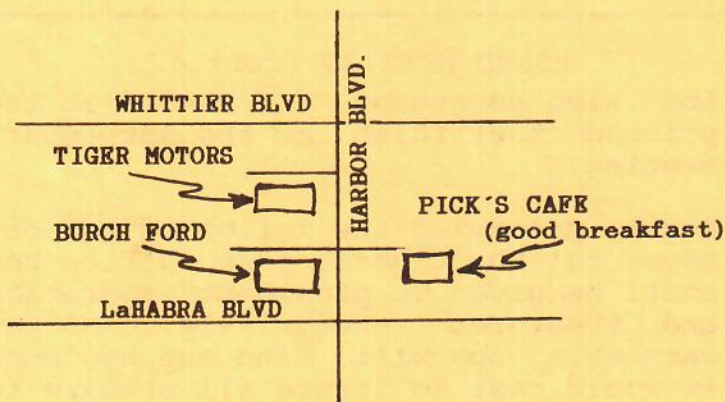
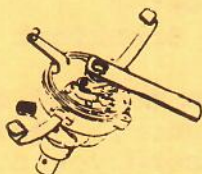


by Terry Lucas and Paul Steed, Technical Director

As Co-Host for this years' technical position on the board of directors I would like to let you know that Terry and I have planned a years worth of seminars from tune-ups to fender wells.

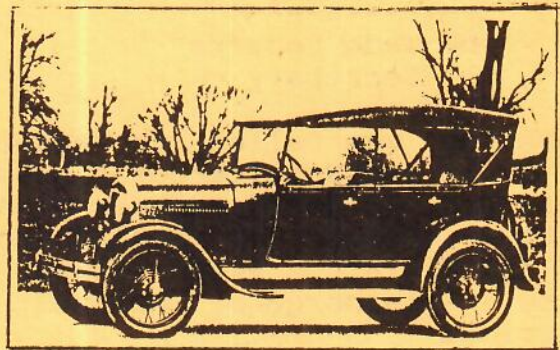
The January technical seminar will be held on Saturday the 16th at 8:30 A.M. until..... Topic; performance tuning the Model A. If you think your "A" runs good now... just wait!

Paul Steed



TECHNICAL SEMINAR
@ TIGER MOTORS

MOOSE'S MESSAGE



by Jim Marsh
Activities Director

Well here it is 1993 and time for a new year and new tour season. This year we will have three activity persons; myself, Tom Endy and Richard Parrish. What we hope to do this year is to share the load with the three of us. Richard and I have been around the Club a long time and we will dig up some of the old tours we've done in the past while Tom, the "new kid on the block" will come up with some new stuff. We will try to have a variety of tours; some short, some long, Saturday, Sunday and some week-end type. We will have fewer tours than last year (last year was 25) but we need to see more cars on tour. We hope that some of the newer members will come on tour with us. This will be a good opportunity to bring out your car and drive it. If you should have a problem, there are always plenty of "experts" on hand to assist on a repair. So let's get 'em out!

Our first tour for '93 will be to the L.A. Arboretum via surface streets. It will be led by Tom Endy. We will meet at the N.W. corner of Westminster Mall by "Best" on Sunday, Jan 24 at 10:00 A.M. We will have new revised "tour rules" and maps for all participants. Be early for the drivers meeting where we will explain the tour route, the "tour rules" and the day's plan. Please help us and yourself by participating in the activities. Don't worry, be happy and have fun.

Thank you; Jim, Rich & Tom

DUES ARE DUE

Annual dues are now due. Please pay your national dues as well as the local dues to Jim Khalaf, our new treasurer P.O.Box 10595, Santa Ana, Ca 92711 (or at his home address as listed in Lou's column). The club will pay your dues to the National MAFCA in a combined check from our club. See the renewal form in past editions.

If you don't stay current with the National MAFCA it will cost you \$10 extra as a "new member". Even more tragic, if you don't stay current with your local chapter you won't get the "Distributor" or be in the roster.

IN SYMPATHY

We offer our sympathy to Paul Steed who's Father passed away in December.

THANKS FROM PAUL

I would like to wish everyone a happy 1993. I hope everyone's desires were fulfilled for Christmas. Thanks again for all your support and participation in 1992.

Ex-Pres Paul

NEW "LIFE MEMBERS"

Jim and Bev Marsh were named life members at the Club's Christmas Dinner Party. Congratulations to our long term members who were recognized for their contributions over the years.

HARD LUCK TROPHY

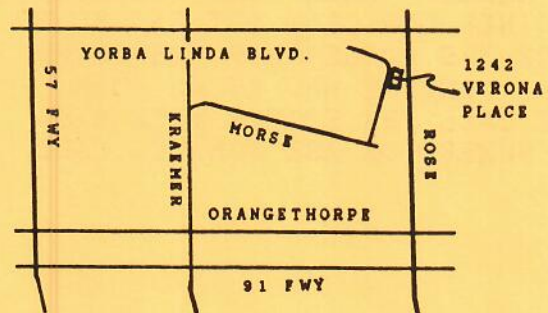
No hard luck was reported for the month of December. Terry Lucas will get to savor the hard luck trophy for an additional month before passing it to the next month's winner.

1993 ROSTER DUE

The 1993 roster of Orange County MAFCA members will be printed in January after including those who have continued their membership by the time we hold the January board meeting.

CONES, CONES, CONES

Linda Tune needs orange traffic cones for the Pancake Breakfast. Her success as Pancake Chairperson has led to gridlock of wall-to-wall Model A's. If you have access to a good supply of these cones and can commit to bring them for traffic control, please contact Linda at 714/832-8239.



BOARD MEETING MAP



NEW PRESIDENT LOU WITH OUT-GOING SECRETARY PEGGY

NEW MEMBERS

The following Model A enthusiasts have joined our Orange County club since the roster was published for 1992.

We welcome them and hope they will join us on tours and our other fun activities

John Beechwood
Peter Brandow
Jim and Chriss Brodsky
Andy Cinke
Ron and Rosemary Miller
Frank and Tina Mowrer
Jim and Joanne Nichols
Robert and Donna Zaitz

EDITOR NEEDS HELP

A NEW MEMBER NAMED JOHN BEECHWOOD HAS JOINED OUR CLUB BUT FAILED TO PROVIDE HIS ADDRESS OR HIS PHONE NUMBER. ANYONE WHO KNOWS JOHN, PLEASE CALL THE EDITOR WITH HIS PHONE NUMBER OR ASK JOHN TO CALL.

ROGER'S GARAGE

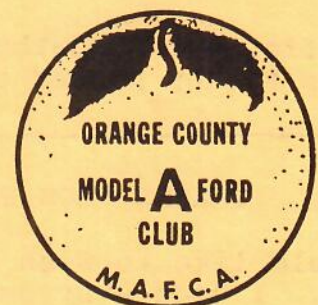
Sorry for the confusion on the horn seminar. I gave Jim the wrong time. Some people showed up in the morning, others came at night. We made x honkers very happy.

I would like to thank every one of you for your support and help this year. I couldn't have done it without you.

Thank you all also for the "Member of the Year" award. It was completely unexpected. See you all next year, remember the pancake breakfast in March.

Thanks again....

Roger Aday



NEW "LIFE MEMBERS" JIM AND BEV MARSH



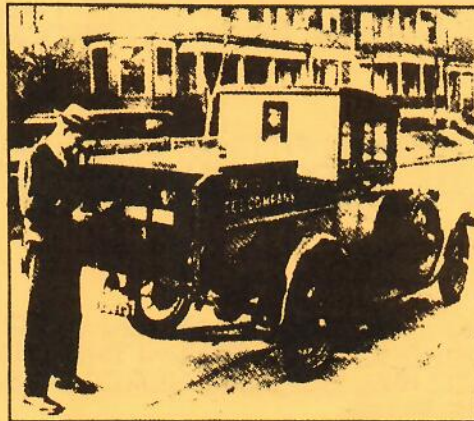
OLD AND NEW CLUB PRESIDENTS



PAUL STEED WITH IGNITION WRENCH GIFT



OUT-GOING SPECIAL EVENTS CHAIRMAN, JOE WAVRA



1929: Installer's truck

arch," said Copp, who had
ies 13 years before dives-
ne big research center; in
out 10 percent research,
development during
core finally gave me
said.

the work environ-

almost no hiring outside of en-
makes a great effort to hire

panies, which for years had followec
handed down by AT&T headquarters
found themselves stripped of outside
This, coupled with rapid changes in
munications industry and in tech
the postdivestiture months
stressful for some engir
operating companies and

hilarating for others.

"Since divestiture, Iod"

Cunning New Hats and Coats

AGES
1 to 3
YEARS



VERY NEW WHITE
OR PRINTED PIQUE

A Smart Little Coat

31 F 4020—Print with white
trim.
31 F 4021—White
with print trim. \$1.59

AGES: 1, 2, 3 years. State age-
size. We Pay Postage.

Very new and much in vogue
for tiny misses! This very smart
Cotton Pique Coat has embroid-
ered collar and scalloped edge;
cuffs also scalloped. Sateen lined.

Ages
1 to 4
Years

For
Boys
or
Girls



Over 3/4 Wool Tweed Coat
31 F 4124—Gray or
tan. Sateen lined. \$4.00

One-Third Wool Tweed
31 F 4110—Gray or tan. \$2.98
Cotton alpaca weave lining.

Embroidered Hat

31 F 4311—Tan All Silk 98¢

31 F 4312—Tan rep. \$59¢

SIZES: 19 to 20 1/2 inches.



ALL WOOL FLANNEL

31 F 4102—Red or Copen
blue. AGES: 1, 2, 3, 4 years. \$3.98

State color and size. Post-
paid. Pretty All Wool Flannel
Coat that fashion-wise wee
misses will be justified in teas-
ing for. Collar points and pock-
ets attractively trimmed with
pin tucks and hand embroidery.
Button-up collar. Durably
sateen lined. Wonder value!



TWILL OR KASHALENE

31 F 4103—Half Wool
Twill. Navy blue. \$2.98

31 F 4104—Half Wool
Kashalene Tan. \$2.98

AGES: 1, 2, 3, 4 years.
State age-size. We Pay
Postage.

Very smart yet inexpensive
Coat with set-in band on the
collar and pocket tops of red
flannel. Pin tucking trims bot-
tom. Sateen lined.



POIRET TWILL

31 F 4105—Copen;
navy blue; brick dust. \$2.98

AGES: 1, 2, 3, 4 years. State
age-size and color. Postpaid.

Becoming yoke style Coat of
Half Wool Poiret Twill. Hand
smocking, hand embroidery and
pin tuck trim. Button-up col-
lar. Durably sateen lined.

MODEL 'A' FORD LUBRICATION FITTINGS

505 SIDONCE



A-24405

THREADED CONE GREASE FITTING: CADMIUM PLATED; HAS AN INTERNAL BALL CHECK VALVE TO PREVENT GREASE FROM EXTRUDING OUT; USED ON RUNNING GEAR JOINTS WHERE THE GREASE IS SUBJECTED TO HIGH WORKING PRESSURE; $\frac{1}{8}$ PIPE THREAD; 10 REQUIRED PER CAR.



A-24404-57

PRESS FIT CONE GREASE FITTING: CADMIUM PLATED; USED TO LUBRICATE BUSHED JOINTS IN THE RUNNING GEAR SUCH AS BRAKE LEVERS, SPRING SHACKLES, ETC; 16 REQUIRED PER CAR.



A-24407

PRESS FIT HEXAGONAL GREASE FITTING: CADMIUM PLATED; USED TO LUBRICATE THE UPPER KING PIN BUSHING IN THE SPINDLES; ALSO USED TO LUBRICATE THE A-2828-AR EMERGENCY BRAKE CROSS SHAFT ON 1928, '29, & EARLY 1930 CARS; 4 REQUIRED ON 1928, '29, & EARLY '30 CARS; 2 ON 1930-'31.



A-24406

THREADED CONE GREASE FITTING: BRASS; HAS THREADED BRASS CAP AND IS USED TO LUBRICATE THE WATER PUMP REAR BUSHING; $\frac{1}{8}$ PIPE THREAD; 1 REQUIRED PER CAR.



A-24409

SPHERICAL GREASE FITTING: CADMIUM PLATED; USED TO LUBRICATE THE SHOCK ABSORBER CONNECTING LINK BALL JOINTS; 4 REQUIRED PER CAR.



A-24452

TRANSMISSION CASE PLUG: PLAIN OR RAVEN FINISH; 2 REQUIRED; USED TO FILL & DRAIN THE TRANSMISSION OIL; $\frac{3}{4}$ PIPE THREAD; $\frac{15}{16}$ SQUARE HEAD; THIS ITEM IS A STANDARD PIPE PLUG.



A-24457

DIFFERENTIAL HOUSING PLUG: PLAIN OR RAVEN FINISH; 2 REQUIRED; USED TO FILL & DRAIN THE DIFFERENTIAL OIL;



A-24465

SHOCK ABSORBER COVER PLUG: PAINTED BLACK; USED TO SERVICE THE SHOCK ABSORBER FLUID; $\frac{1}{8}$ PIPE THREAD; $\frac{3}{8}$ SQUARE HEAD; 4 REQUIRED PER CAR.



A-12135

DISTRIBUTOR OIL CUP: NICKLE PLATED BRASS; HAS A SPRING LOADED COVER; USED TO OIL THE UPPER DISTRIBUTOR SHAFT BUSHING.



GENERATOR OIL CUP: CADMIUM PLATED; HAS A SPRING LOADED COVER; USED TO OIL THE ARMATURE SHAFT REAR BUSHING; PRESS FIT.

Thank: Evergreen Echoes
AND THE CONNECTING ROD

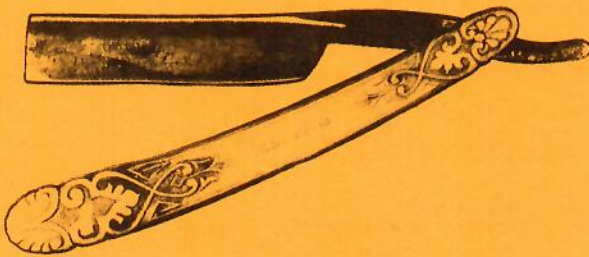
DISTRIBUTOR CLASSIFIED ADVERTISEMENTS

VINTAGE *Ford* PARTS

11318 BEACH BLVD., STANTON, CA 90680
(714) 894-5464

1909 TO 1959
CARS AND TRUCKS
F-100's TO 1966

HOURS:
Mon.-Fri. 9 - 5
Sat. 9 - 4



ELECTRIC
Brand

RED KIDNEY BEANS

GUARANTEED UNDER THE
JUNE 30, 1906. FOOD AND DRUGS ACT.
SERIAL NO. 9799

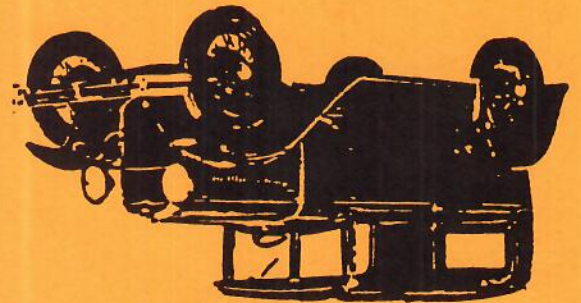
Electric
BRAND

RED KIDNEY BEANS

Packed by
OLNEY & FLOYD,
at WESTERNVILLE,
ONEIDA CO., N.Y.

First Class Mail

MAFCA
ORANGE COUNTY CHAPTER
POST OFFICE BOX 10595
SANTA ANA, CA 92711



[GENERAL MEETING LOCATION]

